



MONTHLY MEMBERSHIP PROGRESS REPORT

District 323 C

Results as of: 5/31/2015

GMT: KAMLESH JAIN

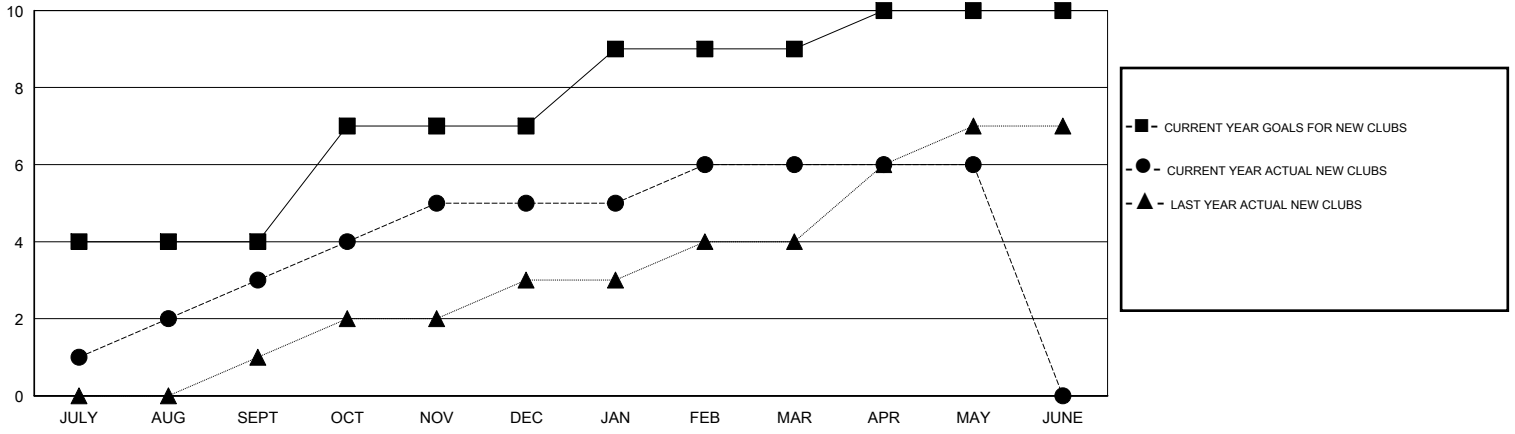
LOCATION INDIA

GMT CA 6

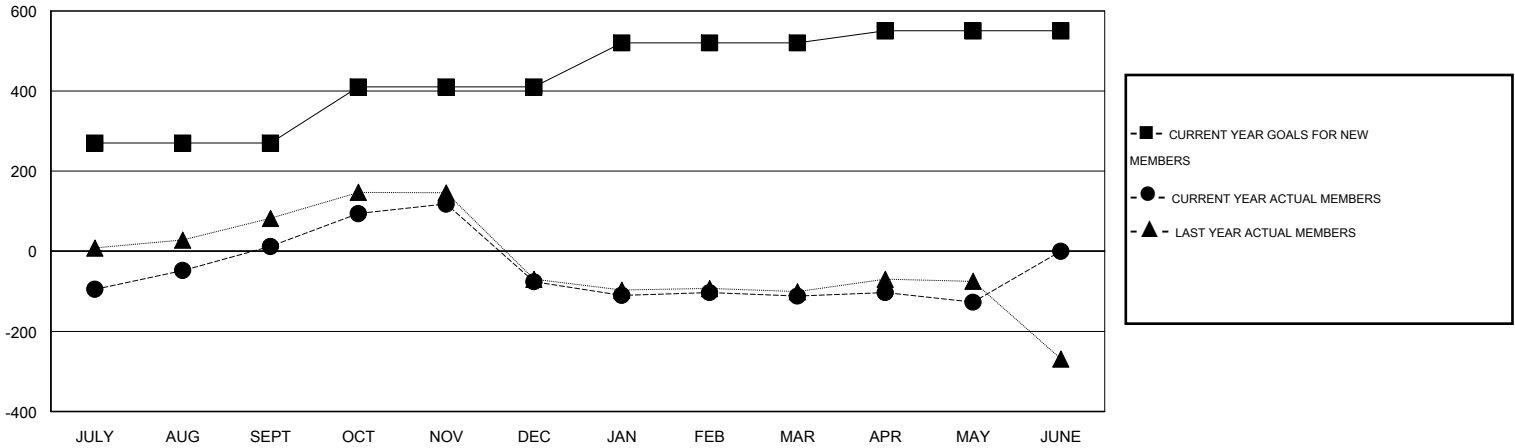
Clubs				
RESULTS FOR 2014-2015				
QUARTER	NEW CLUB GOAL	NEW CLUBS	DROPPED CLUBS	NET GAIN/LOSS
JULY/AUG/SEPT	4	3	0	3
OCT/NOV/DEC	3	2	8	-6
JAN/FEB/MAR	2	1	3	-2
APR/MAY/JUNE	1	0	1	-1

Members				
RESULTS FOR 2014-2015				
QUARTER	NEW MEMBER GOAL	CHARTER AND NEW MEMBERS ADDED	DROPPED MEMBERS	NET GAIN/LOSS
JULY/AUG/SEPT	270	160	148	12
OCT/NOV/DEC	140	120	208	-88
JAN/FEB/MAR	110	73	109	-36
APR/MAY/JUNE	30	58	73	-15

GOALS AND ACTUAL NEW CLUBS CUMULATIVE



GOALS AND ACTUAL MEMBERS CUMULATIVE



DROPPED CLUBS: 12

51 CLUBS OF 93 ADDED 1 OR MORE NEW MEMBERS

GENDER DISTRIBUTION	
MALE	2,165 (78.96%)
FEMALE	577 (21.04%)

DROPPED MEMBERS	
DECEASED	7
CLUB CANCELLED	247
OTHER	284
TOTAL	538

[CLICK HERE FOR HEALTH ASSESSMENT DATA](#)

FAMILY UNIT MEMBERS	718
HEAD OF HOUSEHOLD	330
NON-HEAD OF HOUSEHOLD	388